

Disassembly SMART-LIGHT-PAC [SLP]



1. Assembled SLP.



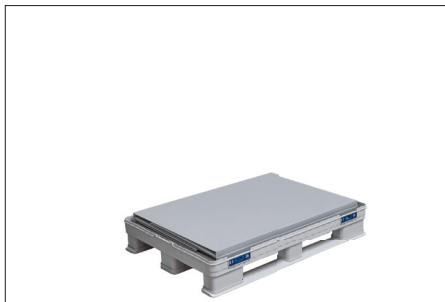
2. First remove the lid. In addition pull the lid upwards.
There is no manual handling of the locks required.



3. Now just pull the sleeve upwards.



4. Fold down the sleeve.



5. With the next step you fold down the sleeve completely and put it on the base.



6. Finally, the lid is placed.